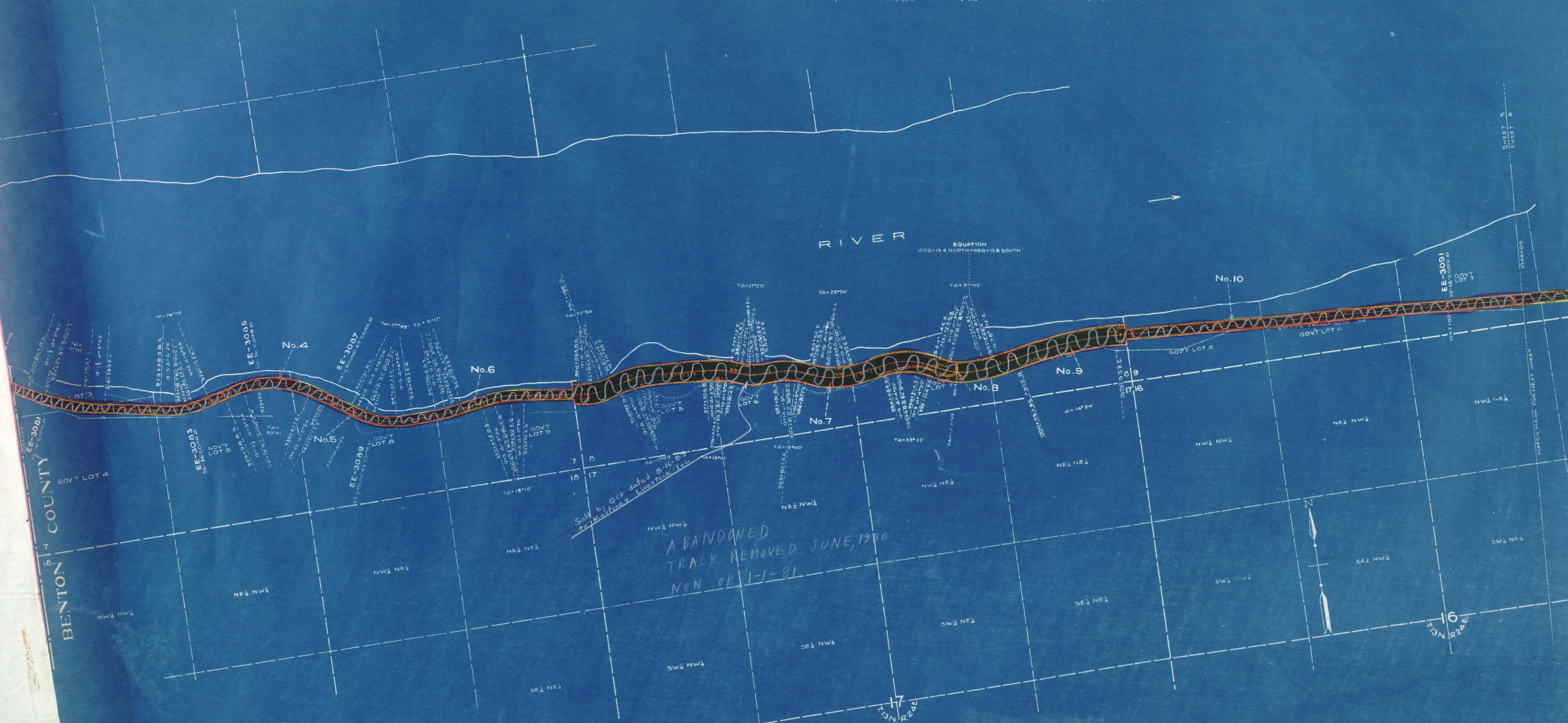


PANEL NUMBER	GRANTOR	GRANTEE	INSTRUMENT	DATE	RECORD	CUSTOMER'S NO.	REMARKS
1	Hanford Irrigation & Power Co.	CM&PSRyCo.	W.D.	2-25-15	176, N14, July	7, 1913	6690
2	United States	CM&PSRyCo.	Grant & Filing Map	9-7-09	---	---	U-142
3	J. W. Spahr & Wife	CM&PSRyCo.	W.D.	5-31-18	617, 26, July	13, 1912	6902
4	Northern Pacific Ry. Co.	CM&PSRyCo.	R.W.D.	6-6-10	22, 226, Dec.	1, 1910	5114
5	Northern Pacific Ry. Co.	CM&PSRyCo.	R.W.D.	6-5-10	22, 226, Dec.	1, 1910	5114
6	Northern Pacific Ry. Co.	CM&PSRyCo.	R.W.D.	6-5-10	22, 226, Dec.	1, 1910	5114
7	United States	CM&PSRyCo.	Grant & Filing Map	9-7-09	---	---	U-142
8	United States	CM&PSRyCo.	Grant & Filing Map	9-7-09	---	---	U-142
9	United States	CM&PSRyCo.	Grant & Filing Map	9-7-09	---	---	U-142
10	Northern Pacific Ry. Co.	CM&PSRyCo.	R.W.D.	6-6-10	22, 226, Dec.	1, 1910	5114

RANGE 24 EAST



RIGHT OF WAY AND TRACK MAP  
CHICAGO, MILWAUKEE & ST. PAUL RY. CO.

OPERATED BY THE  
CHICAGO, MILWAUKEE & ST. PAUL RY. CO.  
COAST DIVISION  
STATION 844+37.2 TO STATION 1049+08

Sheet No. 5 of 12 sheets of C. M. & St. P. Ry. Co. Main Line  
from survey station 844+37.2 to survey station 1049+08

*A. E. Loder*

SCALE: 1 IN. = 4 MILES  
JUNE 30, 1918.  
OFFICE OF VALUATION ENGINEER  
CHICAGO, ILLINOIS.

V.W.-8  
5

BENTON